

AP 1001

Three Mile Island Nuclear Station
Special Operating Procedure

SIDE 1

Figure 1001-8

SOP No. E-61
(From SOP Log Index)

NOTE: Instructions and _____ in AP 1001
must be followed when completing

Unit No. 2

Date 4-7-79

1. Title JOG CONTROL FOR RC-UZ

2. Purpose (Include purpose of SOP)

*Provide guidance for wiring modifications for jog control
of RC-UE. (To allow use as alternate design method for Prohibit)*

3. Attach procedure to this form written according to the following format.

A. Limitations and Precautions

- 1. Nuclear Safety NONE
- 2. Environmental Safety UNCL
- 3. Personnel Safety COMPAT WITH AP1002 & AP1003
- 4. Equipment Protection NONE

B. Prerequisites

C. Procedure } PER ATTACHED

CONTROL ROOM
NR
CONTROL ROOM

4. Generated by James P. Paulos Date 4/5/79

5. Duration of SOP - Shall be no longer than 90 days from the effective date of the SOP or (a) (b) below - whichever occurs first.

(a) SOP will be cancelled by incorporation into existing or new permanent procedure submitted by _____

(b) SOP is not valid after _____
(fill in circumstances which will result in SOP being cancelled)

6. (a) Is the procedure Nuclear Safety Related?
If "yes", complete Nuclear Safety Evaluation. (Side 2 of this Form) Yes No

(b) Does the procedure affect Environmental Protection?
If "yes", complete Environmental Evaluation. (Side 2 of this Form) Yes No

(c) Does the procedure affect radiation exposure to personnel? Yes No

NOTE: If all responses are "no", the change may be approved by the Shift Supervisor. If any questions are answered "yes", the change must be approved by the Unit Superintendent.

7. Review and Approval

Approved - Shift Supervisor J.P. Paulos 4-7-79

Reviewed - List members of PORC contacted

<u>RWB Ensel</u>	<u>4-6-79</u>	Date
<u>J.P. Paulos</u>	<u>4/6/79</u>	Date
<u>J.B. Sumner (Vic-Chairman)</u>	<u>4/6/79</u>	Date
<u>W.R. Paddy</u>	<u>4/6/79</u>	Date

Approved - Unit Superintendent ARA 4/6/79

8. SOP is Cancelled

Shift Supervisor/Shift Foreman Date 131 226

B Prerequisites:

1. Ensure electrician reviews attached drawings prior to commencing work. (Draw 3025 Sh 52 & Draw 3033 Sh 84R - both attached)
2. Obtain RWP

C. Procedure

1. Notify Shift Foreman/Supervisor prior to commencing work. Minimize entry time and working time
2. Ensure RC-VZ is closed prior to tripping MCC breaker.
3. Trip breaker @ MCC 2-32B Compartment 4BR.
4. Locate and lift ~~lead~~ internal lead between terminal 45 and N.O. contact of "O" starter.
5. Locate and lift internal lead between terminal 55 and N.O. contact of "C" starter.
6. During a previous attempt to provide jog control for RC-VZ, the internal jumpers between Term 45 to A45 and between 55 to A55 ^{may have been} removed. Reconnect jumpers if time permits (This will allow control of RC-VZ from local control station)
7. Close breaker @ MCC 2-32B Compartment 4BR
8. Notify Shift Foreman/Supervisor after work is completed.
9. Enter lifted leads in jumper and lifted lead log.

131 227

HP. [unclear] Personnel and to advise on Best route to MCC 2-32B
and RETURN AND NOTIFY SUPERVISOR TO ADVISE IF APPLICABLE

LIMIT SV		CONTACT	
LEGEND	CONTACT	FULL	INTERMEDIATE
	20-0	1	CLOSED
	20-0	2	CLOSED
	20-10	3	OPEN
	20-10	4	CLOSED
	20-C	5	OPEN
	20-C	6	OPEN
	20-10	7	CLOSED
	20-10	8	CLOSED

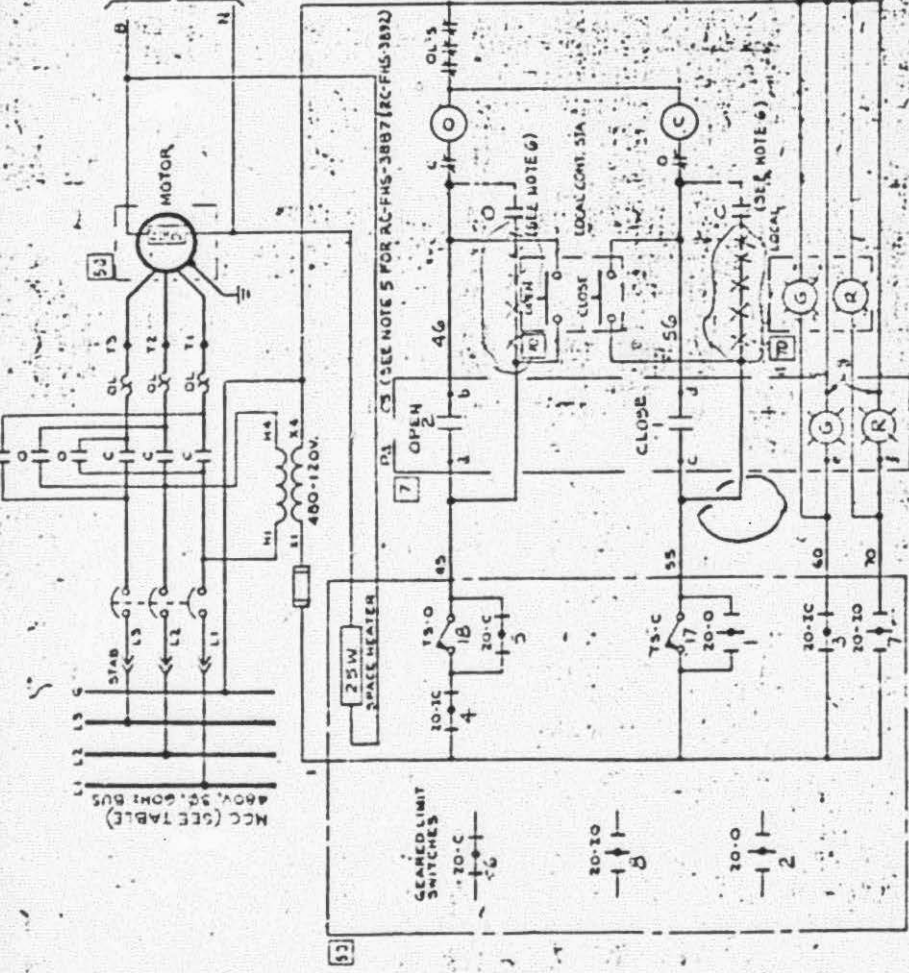
SPACE HEATER PANEL
MOTOR
(SEE TABLE FOR
FUNCTIONAL
SPACE HEATER MOTOR)

WAVE	M/C	OFF	HP	PHL-4	SWITCH	AND	LIGHTS	SPEC	7	UNIT
RCV-1	532	458	07	1440	43	1448	1447	1447	1446	1447
RCV-2	322	240	33	307	107	6	107	107	107	107
RCV-3	242	242	242	104	104	104	104	104	104	104

CONTACT	LEGEND	OPEN
1		<input checked="" type="checkbox"/>
2		<input type="checkbox"/>

NOTES:

- CLOSING TORQUE SWITCH INTERFERES MECHANICAL OVERLOAD OCCURS
- OPENING TORQUE SWITCH INTERFERES MECHANICAL OVERLOAD OCCURS
- ALL WORK SHOWN ON THIS DRAWING SPEC 2550-45 EXCEPT AS NOTED
- DEVELOPMENT OF LIMIT SWITCH CONTACTS 1 TO 5 EXCEPT WITH ALIEN POSITIONS. CONTACTS 7 TO 8 WISE NOTED.
- CONTROL SWITCHES & INDICATOR PH-3842 ARE SUPPLIED UNIT ON CONSOLE 4 UNDER SPEC 2550-45



FRONT VIEW

CONTROLLED

BU	GRADELL N 7
400V M	PH-555URIZI
THREE	RECEIVED
U.S. NAVY	U.S. NAVY
RECEIVED	AUG 28 1976
RECEIVED	REPAIRING
RECEIVED	DEPARTMENT

APPROVED BY CLIENT	DATE
IF NOT REQ'D	BY
BY	DATE

GEARED LIMIT SWITCH COMPARTMENT	REVISED SPEC. NO.
REVISED SPEC. NO.	APPROVALS PER PERMITS SUPPL 2
REVISED SPEC. NO.	APPROVALS PER PERMITS SUPPL 2
REVISED SPEC. NO.	APPROVALS PER PERMITS SUPPL 2

FOR PREVIOUS REVISIONS SEE MAC CARDS.

Dwg 3075 Sh 52

SOP Z-61
Attachment 1 of 2

RC-V2

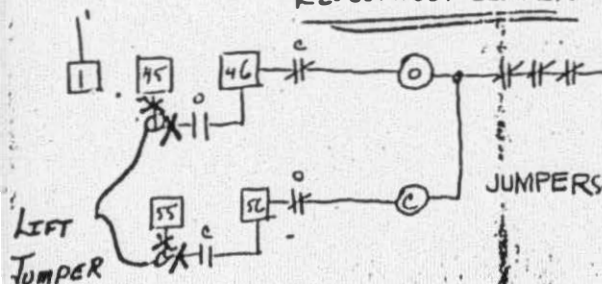
M. DIAG. 3075 (SHT. 52)

RE

~~SAME AS UNIT IDR~~

~~(SEE DWG. 3033 RIR)~~

RE-Connect JUMPERS

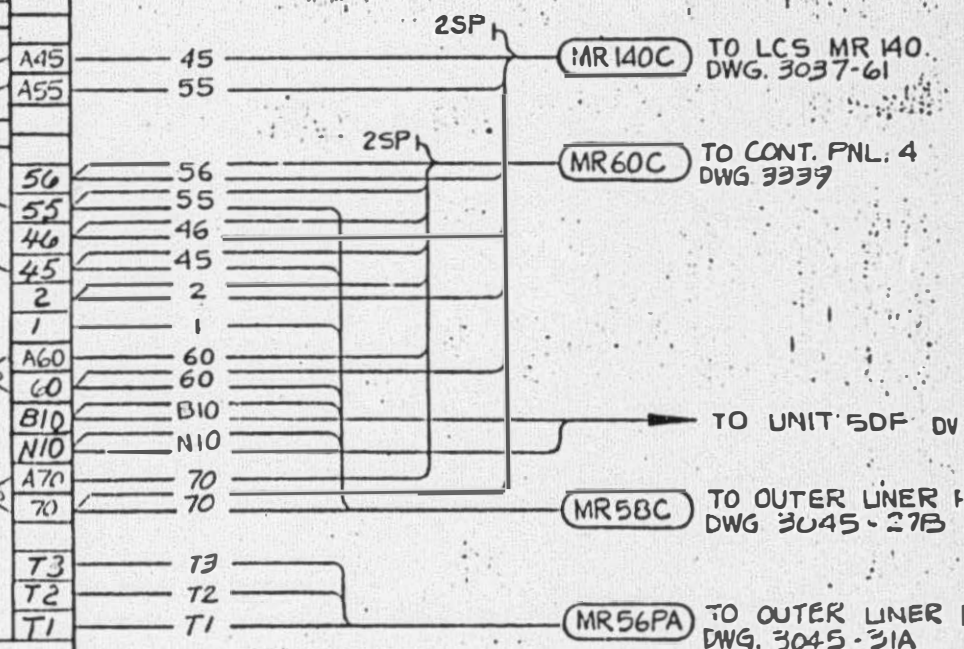


131

229

BLANK

SOP 2-61
Attachment 2 of 2



3033SH R 4R